

Another industry first.

KOHLER® Closed-Loop EFI

Twin-Cylinder Engines



KOHLER®

KOHLER® Closed-Loop EFI

The new standard in twin-cylinder engine performance.

Available on our Command PRO® engines, KOHLER closed-loop EFI includes an oxygen sensor that analyzes the exhaust gas air/fuel mixture in the muffler. If the oxygen level strays from the ideal air/fuel mixture, the sensor triggers adjustments in the Electronic Control Unit (ECU). KOHLER closed-loop EFI engines “close the loop” between the air/fuel intake and the exhaust output to provide a constant stream of critical feedback – and optimal power and fuel economy. The closed-loop advantage also means that KOHLER closed-loop EFI engines automatically adapt to load, weather, fuel and altitude changes, resulting in improved power, performance, reliability and increased life span.

LOWEST OPERATING COST

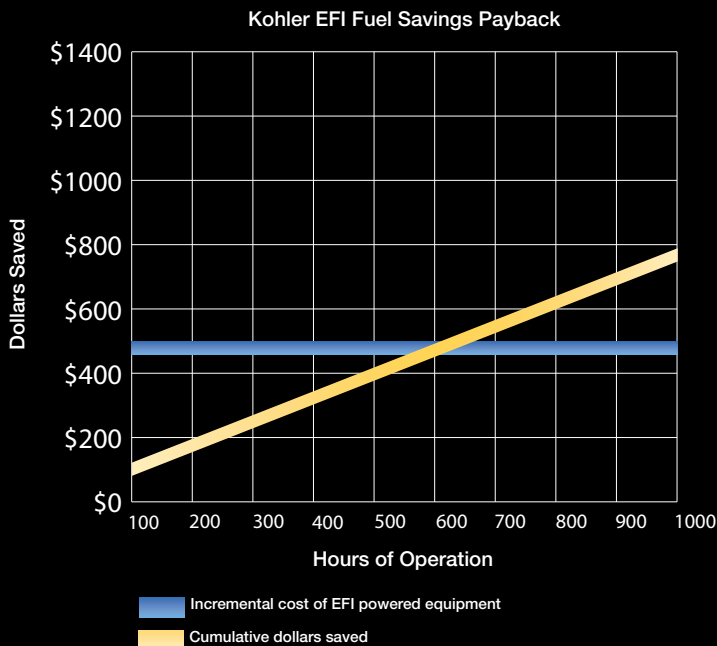
Optimized Fuel Economy

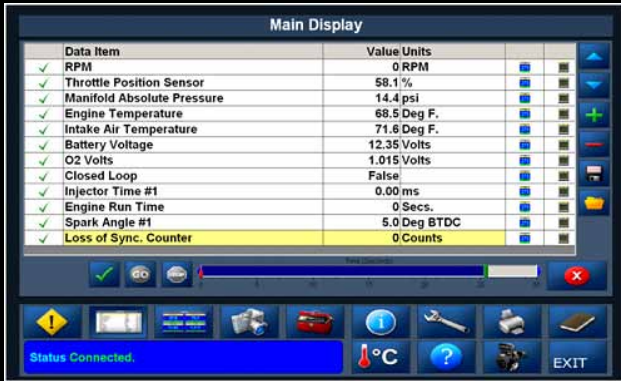
- Capable of saving up to 25% in fuel over similar-sized carbureted engines
- Advanced oxygen sensor analyzes the exhaust’s air/fuel mixture
- Upon analysis, the oxygen sensor adjusts the air/fuel mixture for optimum fuel efficiency
- On top of the savings, you’ll also refuel less, increasing your overall efficiency

Faster Payback

- Fast payback for your investment
- Every hour of use is more money in your pocket in savings
- With continued use, you can pay back the cost of the EFI system in one year or less*

*Based on 600 hours of operation

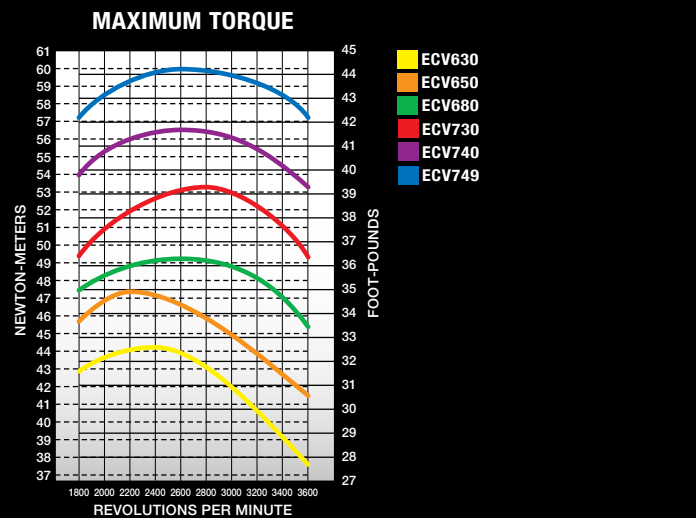
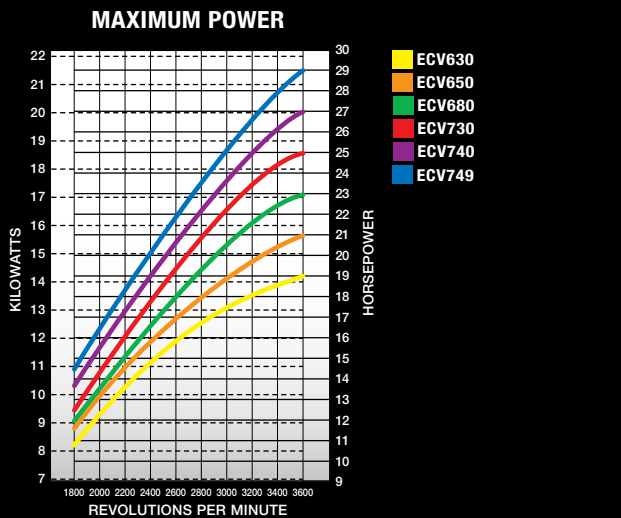




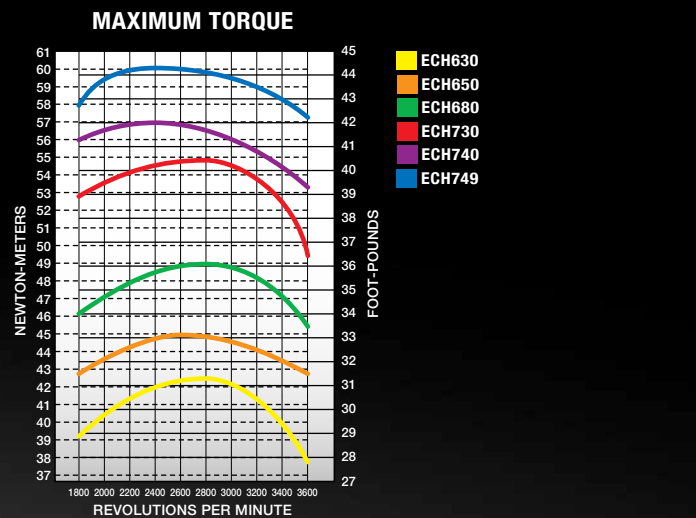
INCREASED RELIABILITY AND EFFICIENCY

KOHLER EFI diagnostic software was developed specifically for KOHLER® engines equipped with electronic fuel injection (EFI). This proprietary software assists in troubleshooting and provides data on engine-operating parameters for the life of the engine. The EFI ECU maintains an internal log of the operating conditions, total hours, oil temperatures and detailed load diagnostics providing dealers with critical performance information.

ECV



ECH



KOHLER® Closed-Loop Electronic Fuel Injection

Model	ECH/ECV630	ECH/ECV650	ECH/ECV680	ECH/ECV730	ECH/ECV740	ECH/ECV749
*Power @ 3600 rpm Max. hp (kW)	19 (14.2)	21 (15.7)	23 (17.2)	25 (18.6)	27 (20.1)	29 (21.6)
Displacement cu in (cc)	42 (694)			45 (747)		
Bore in (mm)	3.3 (83)					
Stroke in (mm)	2.6 (67)			2.7 (69)		
Peak Torque @ Maximum rpm CH ft lb (Nm)	31.4 (42.6) @ 2800	33.1 (44.9) @ 2600	36.1 (48.9) @ 2800	40.4 (54.8) @ 2800	42.0 (56.9) @ 2400	44.3 (60.1) @ 2400
Peak Torque @ Maximum rpm CV ft lb (Nm)	32.6 (44) @ 2400	34.9 (47.3) @ 2200	36.3 (49.2) @ 2600	39.3 (53.3) @ 2800	41.7 (56.5) @ 2600	44.2 (59.9) @ 2600
Compression Ratio	8.7:1			9.1:1		
Dry Weight lb (kg)	108 (49)					
Oil Capacity U.S. qt (L)	2 (1.9)					
Lubrication	Full-pressure with full-flow filter					
Dimensions L x W x H in (mm)	a/b					
**a = CH	flat air cleaner	14.6(371) x 18.2 (462) x 18.7 (475)				
	heavy-duty air cleaner	14.8 (376) x 18.9 (480) x 24.5 (622)				
***b = CV	flat air cleaner	17.9 (455) x 18.3 (465) x 14.5 (368)				
	heavy-duty air cleaner	21.3 (541) x 18.5 (470) x 17.6 (447)				

* Horsepower ratings meets Society of Automotive Engineers Small Engine Test Code J1940. Actual engine horsepower is lower and affected by, but not limited to, accessories (air cleaner, exhaust, charging, cooling, fuel pump, etc.), application, engine speed and ambient operating conditions (temperature, humidity and altitude). For more information, contact Kohler Co. Engine Engineering. Kohler reserves the right to change product specifications, designs and equipment without notice and without incurring obligation.

** L = grass screen to PTO mounting face W = spark plug to spark plug H = top of air cleaner cover to mounting feet

*** L = blower housing to air cleaner cover W = spark plug to spark plug H = top of air cleaner cover to mounting surface

Standard Features

- Closed-loop electronic fuel injection
- 20-amp charging, regulated
- Yellow oil cap and dipstick
- Large filters (air, oil, fuel)
- Hardened crank journals
- PTO side-load sleeve bearing
- Hydraulic valve lifters
- 12-volt solenoid shift electric start
- Dual-element air cleaner
- Dual oil drains
- Electronic ignition
- Solenoid fuel shutdown
- Oil Sentry™ automatic warning/shutdown system (installed, not wired)
- Full-pressure lubrication/full-flow filter

3-Year Limited Warranty

Popular Factory Options

- Remote oil filter
- Variety of mufflers
- Exhaust deflector/spark arrestor
- Engine-mounted controls (CH)
- 5 percent governor
- SAE A/B pump mounts
- Choice of air cleaners (flat, HD, WAWB)
- Guard for rotating grass screen
- Chopper-type grass screen
- Additional crank sizes
- Flywheel PTOs
- Oil Cooler

For more information, contact your KOHLER source of supply
Or call toll-free in the U.S. and Canada 1-800-544-2444.

Kohler Co., Kohler, Wisconsin 53044 Tel 920-457-4441 Fax 920-459-1570

KohlerEngines.com

© 2010 by Kohler Co. All rights reserved.

Kohler® and Command PRO® are trademarks of Kohler Co.

KOHLER®

Relentless Power.
Legendary Performance.

Printed in U.S.A. E-2145-A 10/10